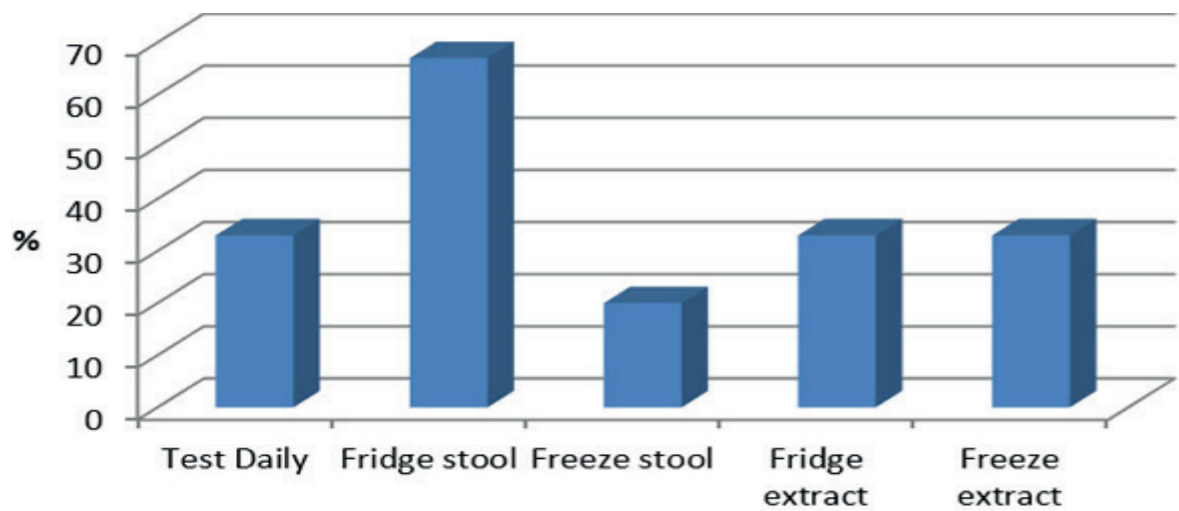


Faecal Calprotectin Testing - What are laboratories doing?

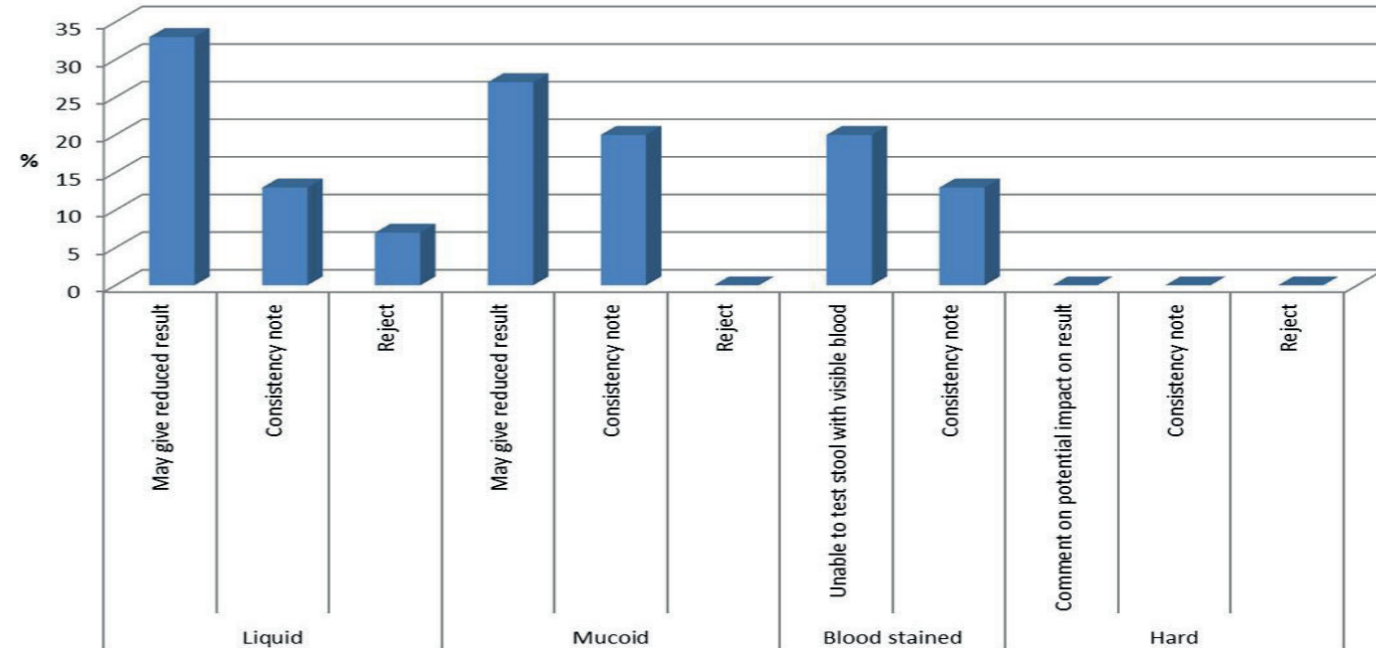
Clinical scientists attending Alpha Laboratories' Digestive Diseases Day 2017 workshop were surveyed regarding the faecal calprotectin assays performed in their laboratories. The results from the attendees are summarised below:

How do you handle samples before analysis?



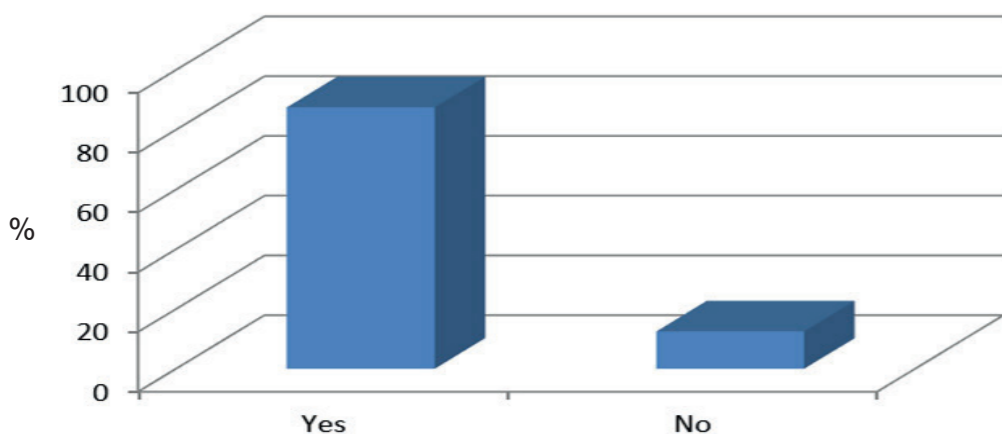
The majority of labs are storing stool samples or extracts at 2-8C before testing, either overnight if testing daily, or for longer term if batching. Freezing of either the stool or extract was mainly performed if there was a delay in the analysis.

What additional comments do you add for the different stool consistencies?



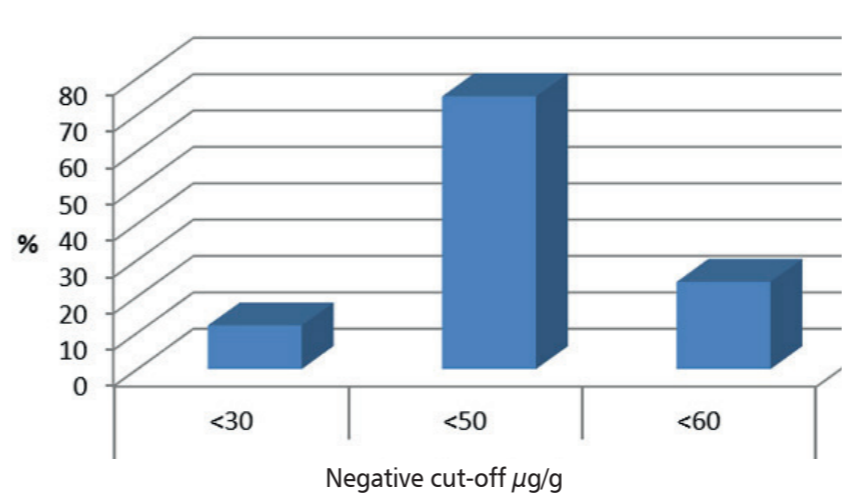
The majority of comments indicating the result might be lower were added to the liquid and mucooid samples. Seven percent of labs didn't test liquid samples, and 20% didn't test blood stained samples, or cancelled the report if the result was abnormal.

Do you accept faecal calprotectin tests from Primary care?

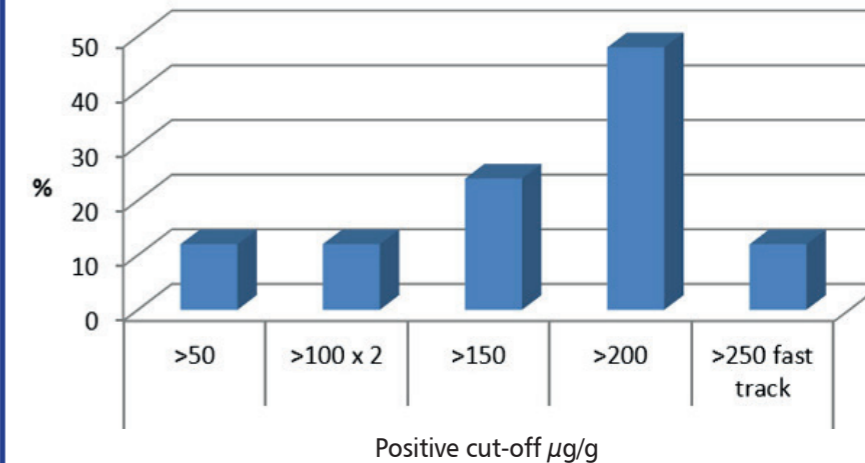


Most laboratories were accepting samples from primary care, with only ~12% stating it was a test still limited to secondary care. One of the hospitals who said they weren't accepting calprotectin samples from primary care were waiting for funding to be made available.

What cut-off value do you use?



<50µg/g was the overwhelming negative cut off value that was reported to be in use, with 75% of laboratories using this.



The majority of labs were also using >200µg/g as their Positive cut off value.